

# NOTICE TO MARINERS

## DUDGEON OFFSHORE WIND FARM CONSTRUCTION WORKS

**NOTICE IS HEREBY GIVEN** that construction activities are in progress at the Dudgeon Offshore Wind Farm and Export Cable Corridor.

Foundation installation is completed and the offshore substation has been installed. Inter array cable burial and preparation for wind turbine generators is ongoing. Wind turbine generators will be installed in the first half of 2017. All construction work is planned to be completed in late 2017.

### **Service Operation Vessel**

The ESVAGT NJORD will be performing preparation support for the operation of the wind farm and will be in regular transit between the Dudgeon site and Great Yarmouth.

### **Inter-Array Cable Burial**

The GRAND CANYON will perform the burial of the Inter-Array Cables to connect the wind turbines to the offshore substation. This operation is ongoing and expected to be completed in late November 2016.

### **Accommodation Vessel**

The VESTLAND CYGNUS will be used as accommodation for engineers at the Dudgeon site and for transfer of personnel to wind turbine foundations and the offshore substation. VESTLAND CYGNUS will be operating at Dudgeon until late 2016. VESTLAND CYGNUS is supported by Crew Transfer Vessels.

The SEA CHALLENGER will be used as accommodation at the Offshore Substation in 2016, and will then be used to install the wind turbine generators in 2017.

### **Commissioning activities**

For the commissioning work there are several Crew Transfers Vessels operating in the wind farm area on a daily basis. This activity is ongoing and will continue until commissioning is completed in Q4 2017.

## **Guard Vessel**

The ADVENTURE will act as a guard vessel to safe guard the wind farm area. During port calls, the ADVANCE will be used as back-up. ADVENTURE will be on location from April - October 2016.

## GENERAL

**MARINERS ARE HEREBY INFORMED** that a statutory construction Safety Zone (exclusion zone) is in place at the wind farm site. This safety zone is defined by:  
A 500 metres radius around each wind turbine, offshore sub-station and their foundations whilst work is being performed as indicated by the presence of construction vessels; and  
A 50 metres radius around each wind turbine, the offshore sub-station platform and associated foundation structures installed, complete or incomplete but waiting to be commissioned as part of the Dudgeon offshore wind farm where personnel are present on, or are being landed on or being taken from, the structures.

**All vessels will exhibit appropriate lights and shapes prescribed by the International Regulations for Preventing Collisions at Sea.**

**ALL VESSELS ARE REQUESTED** to give all construction and support vessels a wide berth.

**MARINERS ARE ADVISED** to navigate with caution and keep continued watch on VHF Ch. 16 when navigating the area.

A further notice to mariners will be issued when these works are completed, expected autumn 2017.

Please direct any enquiries regarding this notice to Statoil Wind Control Centre: [statoilwindcontrol@statoil.com](mailto:statoilwindcontrol@statoil.com)

A copy of this notice can also be found at:

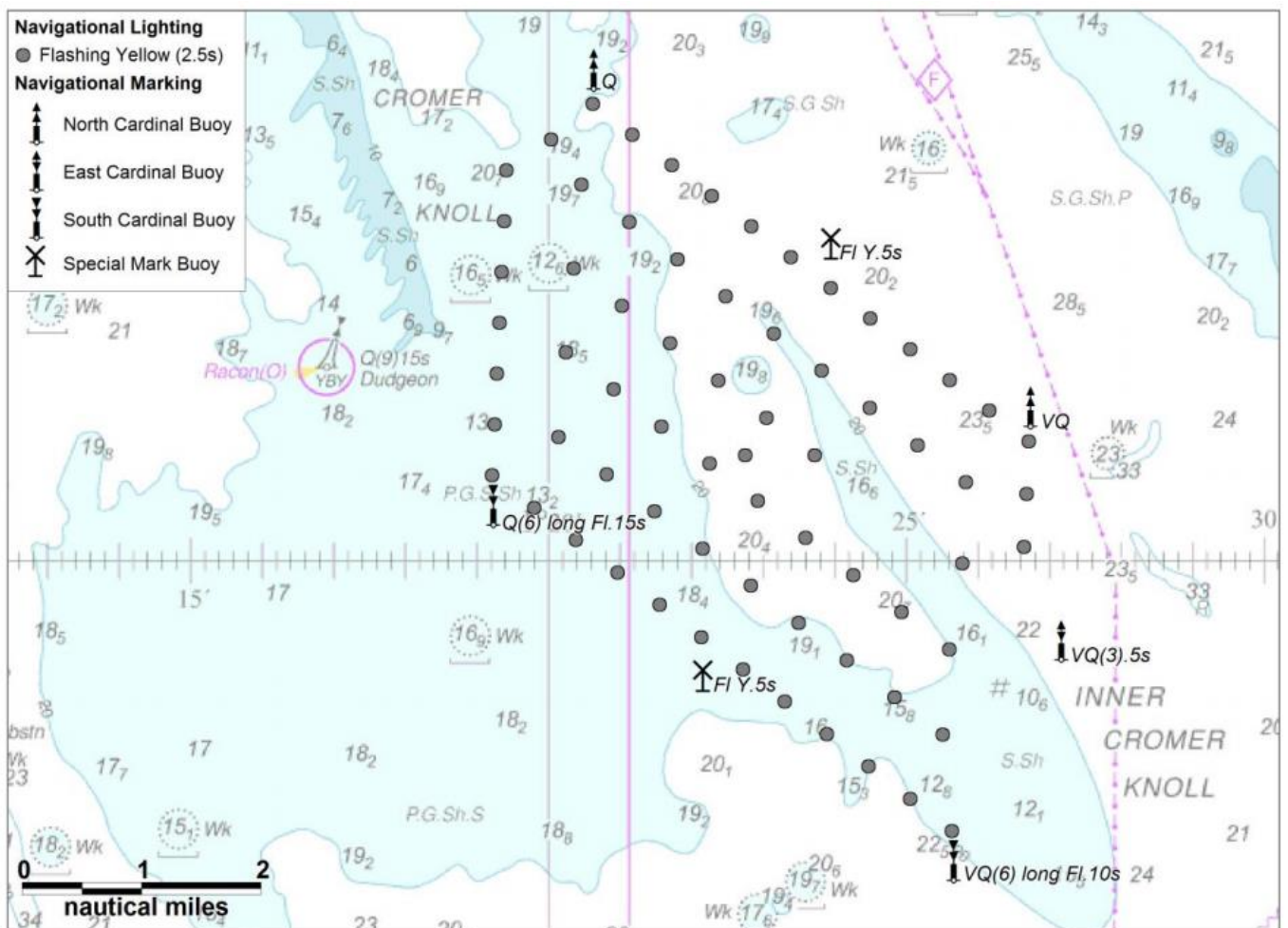
<http://dudgeonoffshorewind.co.uk/news/notice-to-mariners>

**No fishing activities are allowed within the Dudgeon windfarm area (ref. section, Site Details) or at the export cable splice section (ref. section, Unprotected section of the export cable) .**

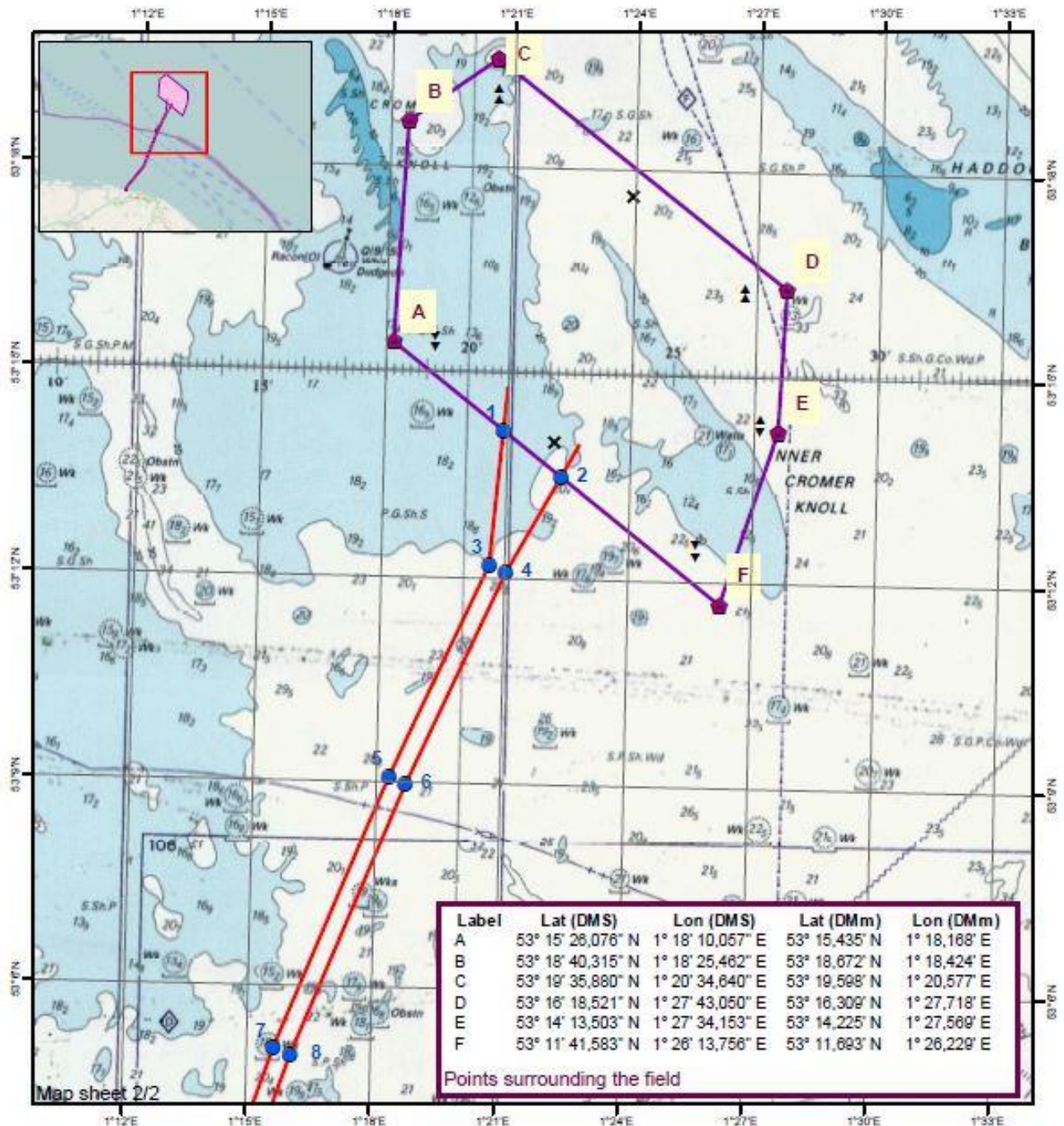
## SITE DETAILS

### Position of Navigation Buoys demarcating the Dudgeon Offshore Wind Farm site

Mark	Location	Name	Latitude	Longitude	Status	Flash Character	Code	Range
North Cardinal	NW Cardinal	N-DOW	53° 19,102' N	1° 20,592' E	Temporary	Q	601	5nm
Special Mark	Special Mark North	DOW - SM - N	53° 17,631' N	1° 23,919' E	Temporary	Fl.Y.5s	328	5nm
North Cardinal	North East Cardinal	NE - DOW	53° 16,277' N	1° 26,691' E	Temporary	VQ	501	5nm
East Cardinal	East Cardinal	E- DOW	53° 14,320' N	1° 27,123' E	Temporary	VQ(3).5s	508	5nm
South Cardinal	SE Cardinal	S - DUDGEON	53° 12,470' N	1° 25,617' E	Permanent	VQ(6) long Fl.10s	516	5nm
Special Mark	Special Mark South	DOW - SM - S	53° 14,012' N	1° 22,132' E	Temporary	Fl.Y.5s	328	5nm
South Cardinal	SW Cardinal	SW - DOW	53° 15,451' N	1° 19,188' E	Temporary	Q(6) long Fl.15s	631	5nm

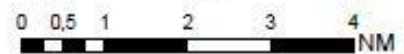


## Wind farm area and cable corridor north


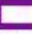









Label	Lat (DMS)	Lon (DMS)	Lat (DMm)	Lon (DMm)
1	53° 14' 10,404" N	1° 20' 53,200" E	53° 14,175' N	1° 20,887' E
2	53° 13' 30,784" N	1° 22' 18,795" E	53° 13,513' N	1° 22,313' E
3	53° 12' 12,063" N	1° 20' 36,508" E	53° 12,201' N	1° 20,608' E
4	53° 12' 5,472" N	1° 21' 1,112" E	53° 12,091' N	1° 21,019' E
5	53° 9' 4,426" N	1° 18' 17,288" E	53° 9,074' N	1° 18,288' E
6	53° 8' 58,127" N	1° 18' 42,081" E	53° 8,969' N	1° 18,701' E
7	53° 6' 4,975" N	1° 15' 38,226" E	53° 5,083' N	1° 15,637' E
8	53° 4' 59,401" N	1° 16' 3,461" E	53° 4,990' N	1° 16,058' E

Points along export cable corridor

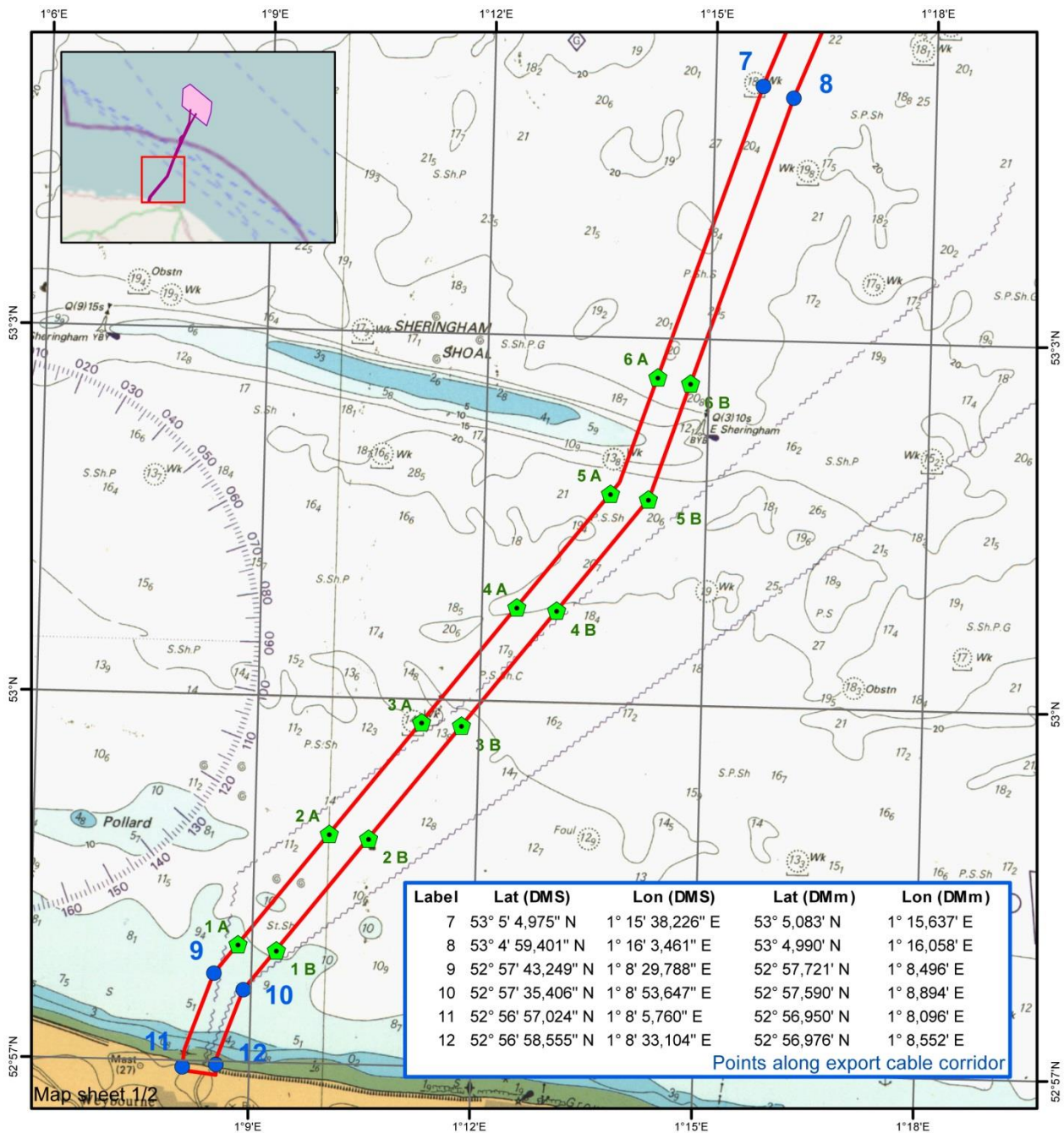


### Legend

-  Fields Boundary Corner points
-  Field Boundary added 1000m
-  Survey Area - Export Cable, points
-  Survey Area - Export Cable
-  East Cardinal
-  North Cardinal
-  South Cardinal
-  Special Mark
-  West Cardinal



# Cable corridor south and export cable landfall



Label	Lat (DMS)	Lon (DMS)	Lat (DMm)	Lon (DMm)
1 A	52° 57' 57,894" N	1° 8' 48,791" E	52° 57,965' N	1° 8,813' E
1 B	52° 57' 55,481" N	1° 9' 19,702" E	52° 57,925' N	1° 9,328' E
2 A	52° 58' 53,227" N	1° 10' 0,633" E	52° 58,887' N	1° 10,011' E
2 B	52° 58' 51,451" N	1° 10' 32,388" E	52° 58,858' N	1° 10,540' E
3 A	52° 59' 49,079" N	1° 11' 13,216" E	52° 59,818' N	1° 11,220' E
3 B	52° 59' 47,890" N	1° 11' 45,752" E	52° 59,798' N	1° 11,763' E
4 A	53° 0' 46,724" N	1° 12' 28,201" E	53° 0,779' N	1° 12,470' E
4 B	53° 0' 45,434" N	1° 13' 0,623" E	53° 0,757' N	1° 13,010' E
5 A	53° 1' 43,601" N	1° 13' 42,256" E	53° 1,727' N	1° 13,704' E
5 B	53° 1' 41,112" N	1° 14' 13,136" E	53° 1,685' N	1° 14,219' E
6 A	53° 2' 41,270" N	1° 14' 18,352" E	53° 2,688' N	1° 14,306' E
6 B	53° 2' 38,543" N	1° 14' 45,145" E	53° 2,642' N	1° 14,752' E

Points marking 1NM intervals from shore

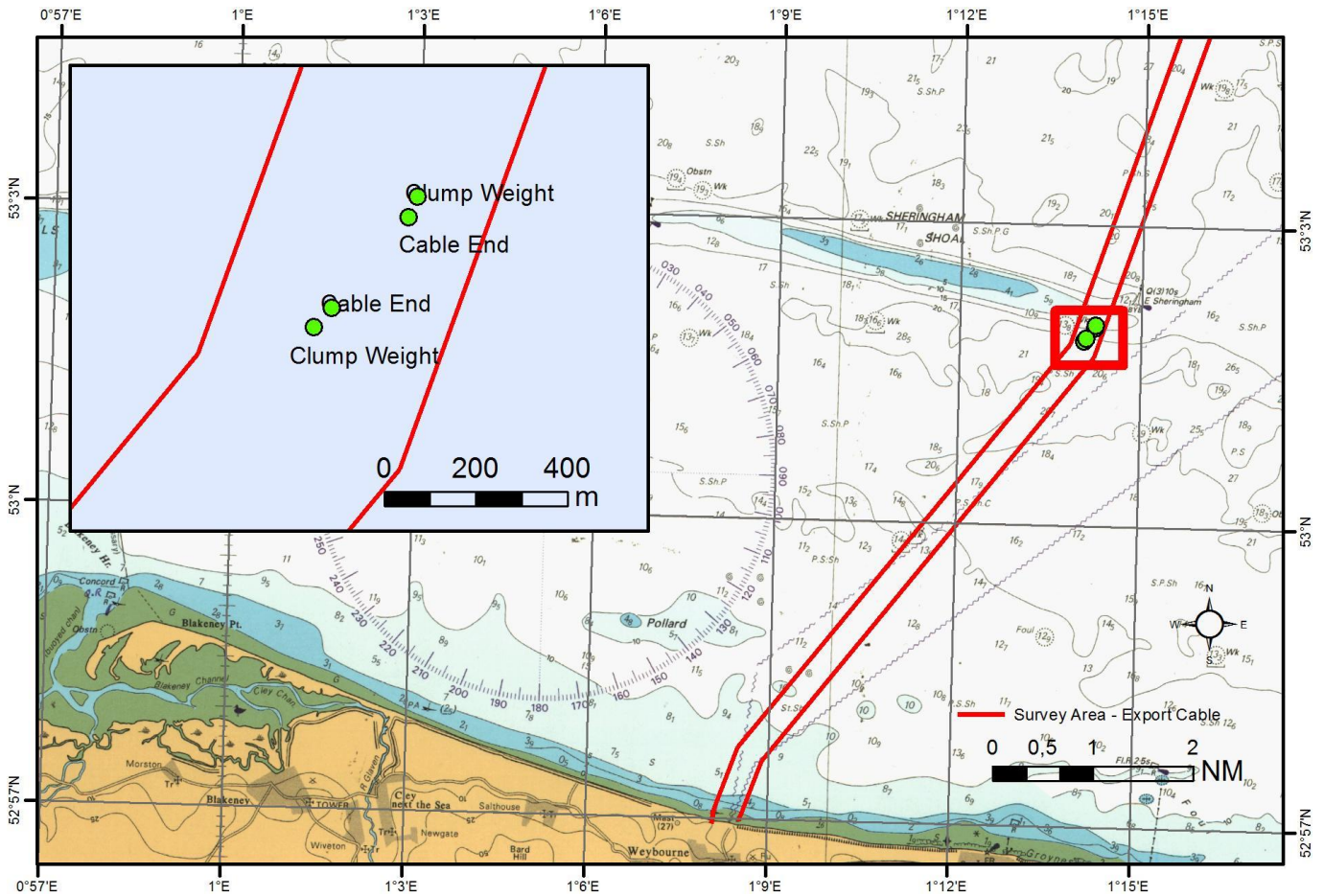


- Legend**
-  1 NM intervall from shore
  -  Survey Area - Export Cable, points
  -  Survey Area - Export Cable



### Unprotected section of the Export Cable.

There is an unprotected section of the export cable on the seabed awaiting burial. This location is defined by the following area:



Cable End: 381789 E, 5877403 N / 53° 01.984' N, 001° 14.229' E

Clump Weight: 381808 E, 5877449 N / 53° 02.009' N, 001° 14.244' E

Holdback anchor / Marker buoy for initiation clump weight

Clump Weight: 381582 E, 5877163 N / 53° 01.853' N, 001° 14.048' E

Cable End: 381621 E, 5877206 N / 53° 01.876' N, 001° 14.082' E

## KEY CONSTRUCTION VESSEL CONTACT DETAILS

### GRAND CANYON



**Call sign:** 3EVR8

**Bridge phone:** V-sat: +47 22 03 44 99

**Captain:** V-sat +47 21 03 45 00 / Immarsat +870 773205466

**E-mail:** master@grand-canyon.no / Gc1bridgesupt@helixesg.com

### ESVAGT NJORD



**Call sign:** OWZN2

**Bridge Phone:** VSAT.TEL: +45 32 71 26 89; / GSM: +45 32 71 26 85

**E-mail:** njord@esvagtvesse.com



## SEA CHALLENGER



**Call sign:** OWLQ2

**Bridge Phone:** V-sat: +45 89 88 90 10

**Master phone:** vsat +45 89 88 90 11 / GSM +45 52 13 95 80

**E-mail:** seachallenger@a2sea.com / Master mast\_sc@a2sea.com

## VESTLAND CYGNUS



**Callsign:** C6BW7

**Bridge Phone:** VSAT.TEL: +4723677230; +4723677230 / GSM: +47 41 43 02 07

**E-mail:** captain.cygnus@vestlandoffshore.no ; bridge.cygnus@vestlandoffshore.no

## ADVENTURE



**Callsign:** 2IFE4

**Bridge Phone:** V-sat 01947750717

**E-mail:** [adventureGS@gmail.com](mailto:adventureGS@gmail.com) / [adventure.guard1@gmail.com](mailto:adventure.guard1@gmail.com)

## Advance WY77



**Callsign:** MZNA6

**Bridge Phone:** Sat. Phone: 00870773231090/01947 240024

**E-mail:** [adventureGS@gmail.com](mailto:adventureGS@gmail.com)